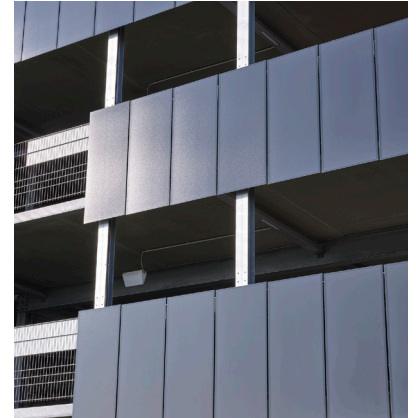


# RWE parking house in Essen (DE)



*Empower your facade*

The use of a simplified substructure makes the realisation of the solar facade on this multi-storey car parking house particularly attractive and is therefore groundbreaking for the further development installation use on industrial facades.



**66.84 MWh**

Energy yield per year



**23,500 kg**

CO<sub>2</sub> savings per year based on country-specific emission factors



Black  
B001

Customer/Architect:

RWE Technology International GmbH

Project realization: 2022

Location: Essen, Germany

Building type: Parking house

Facade area: 840 m<sup>2</sup>

Number of modules: 800 modules

Plant power: 120 kWp

Color: SKALA Black

Project partners: elektroBAU Dresden GmbH

Photos: Olaf Rohl