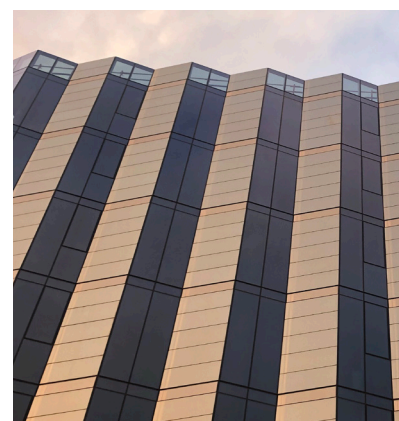


# Spencer Street in Melbourne (AU)



*Empower your facade*



On Australia's first solar facade, transparent window surfaces were combined with opaque solar modules consisting of light grey SKALA modules. The different facade materials are optimally orientated the solar radiation.



**75,73 MWh**

Energy yield per year



**58 310 kg**

CO<sub>2</sub> savings per year based on country-specific emission factors



Light Grey  
G004

Customer:	Fethers architectural pty ltd
Architect:	Pete Kennon
Project realization:	2023
Location:	Melbourne, Australien
Building type:	Commercial building
Facade area:	1203 m <sup>2</sup>
Number of modules:	1220 modules
Plant power:	146 kWp
Color:	SKALA Light Grey
Project partners:	Fethers architectural pty ltd
Photos:	Fethers architectural pty ltd