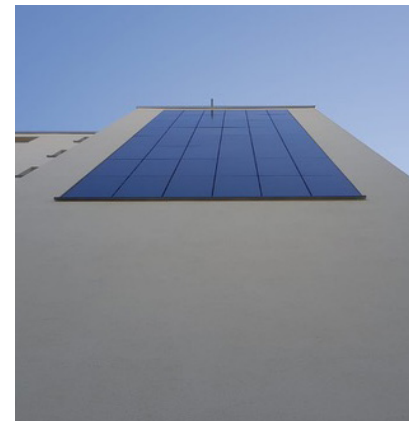
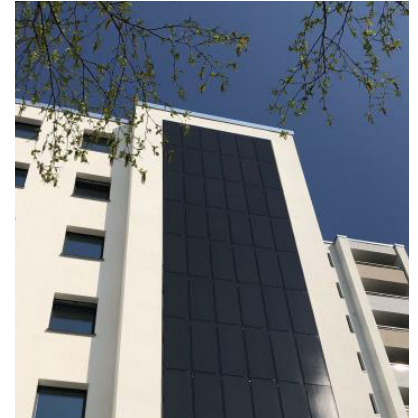


Residential Park Mariendorf in Berlin (DE)



Empower your facade

As part of a modernization project, the 36 houses implemented an energy concept consisting of combined heat and power units and renewable electricity from photovoltaic modules was implemented. The 100 square meter photovoltaic system blends harmoniously into the overall appearance of the building.



7.9 MWh

Energy yield per year



2,800 kg

CO₂ savings per year based on country-specific emission factors



Customer:	Gewobag
Architects:	Projekt Plan & Bau K2 GmbH
Project realization:	2018
Location:	Berlin, Germany
Building typ:	Residential buildings
Facade area:	105 m ²
Number of modules:	96 modules
Plant power:	13.92 kWp
Color:	SKALA Black B001
Project partners:	ecopark GmbH GASAG Solution Plus AG
Photos:	Leo Seidel