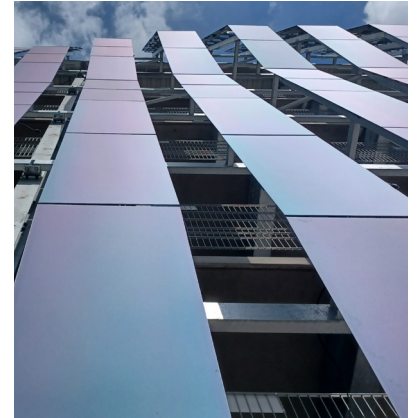


DHL parking house in Leipzig (DE)



Empower your facade

In our first hybrid project, building-integrated photovoltaics and rooftop solar systems were combined on the new parking garage combined to cover a large part of the DHL campus' electricity requirements.



809 MWh

Energy yield per year



305,550 kg

CO₂ savings per year based on country-specific emission factors



Black
B001

Light
Green
4001

Customer:	Leipziger Stadtbau AG
Architects:	Melicia Planchart, Architektur von Domaros
Project realization:	2023
Location:	Schkeuditz, Germany
Building type:	Parking house
Facade/roof:	1,872 m ² / 2,820 m ²
Facade/roof:	2,002 modules/ 1,307 modules
Facade/roof:	240 kWp/ 588 kWp
Facade:	SKALA Black, Light Green
Roof:	Jetion monokristallin
Project partners:	elektroBAU Dresden GmbH
Photos:	elektroBAU Dresden GmbH