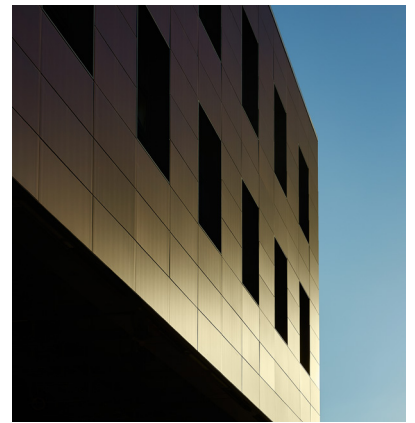


# Campus Aqua in Büsserach (CH)



New warehouse surrounded by a complete solar facade mounted on the north, east, south and west facade. The solar facade is composed of green SKALA modules in standard size combined with customized lengths covering 70 % of the energy self-consumption of the building.



**90 MWh**

Energy yield per year



**1,200 kg**

CO<sub>2</sub> savings per year based on country-specific emission factors



Green  
4002

Customer:	Solvatec Agola AG, Basel
Architects:	Jeker Architekten SIA AG, Basel
Project realization:	2020
Location:	Büsserach, Switzerland
Building typ:	Industrial building
Facade area:	1,432 m <sup>2</sup>
Number of modules:	1,359 modules
Plant power:	176.67 kWp
Color:	SKALA Green
Project partners:	SwissFassadenTechnik AG, Bern
Photos:	Albrecht Voss